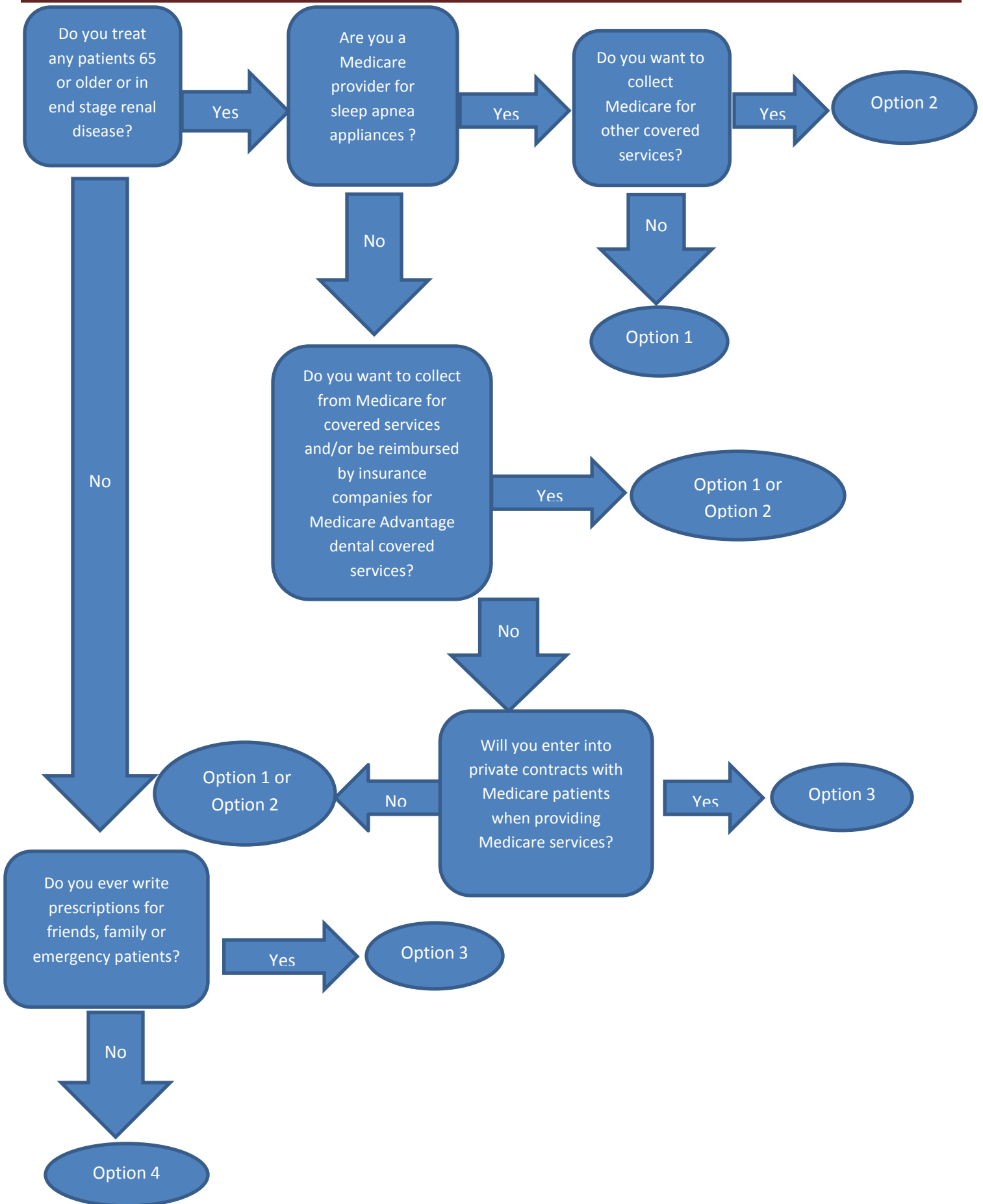


Medicare Decision Tree and Options



Medicare Decision Tree and Options

Option 1

Enroll as Ordering/Referral Provider

- Allows provider to write prescriptions AND order or refer for tests and additional Medicare covered treatments.
- Does not require or allow filing claims to Medicare.
- Has no effect on services excluded by Medicare.

Option 2

Enroll as Part B Provider

- Does not affect services excluded from Medicare such as routine dental procedures.
- Services covered by Medicare, such as biopsies, will be paid at Medicare allowable fees.
- Providers file claims and Medicare rules will apply to all covered services and claims

Option 3

Opt Out of Medicare Program

- Prescriptions written by opted out providers will be covered by Medicare.
- Any testing, such as pathology, will be paid to the laboratory providing the test.
- Providers must enter into a private contract with each Medicare patient before care is delivered that would be a covered Medicare service. The patient must formally agree to give up Medicare payment for services by the dentist and agree to pay the dentist without regard to Medicare's fee limitations.
- The opt out period is valid for two years at which time the provider must choose to either renew the opt out or enroll.
- Providers cannot choose to enroll during the opt out period.

Option 4

No Action Required

- Providers who **never** expect to treat or write prescriptions for Medicare covered patients (including Medicare Advantage) are not required to enroll or opt out of Medicare.